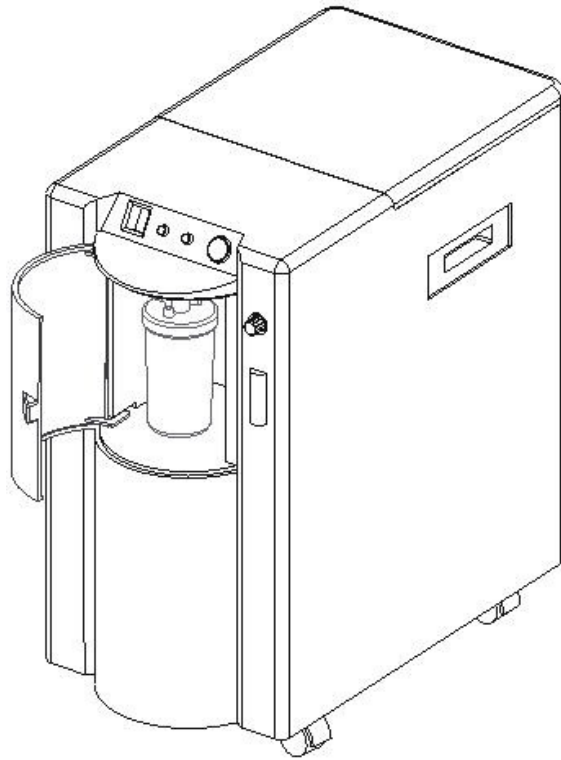




Oxygen Concentrator 7F-3 User's manual



DO NOT OPERATE THIS UNIT WITHOUT FIRST
READING AND UNDERSTANDING THIS MANUAL.
TABLE OF CONTENTS

SAFETY NOTES.....	2-5
FEATURES.....	6-7
HANDLING.....	8
OPERATING.....	9-11
MAINTENANCE.....	12-16
OTHER ATTENTION ITEMS.....	17-18

SAFETY NOTES

WARNING: For avoiding power outage or oxygen concentrator operating failure, exigent oxygen user and serious patient must equip with reserve oxygen supply (for example: oxygen cylinder, oxygen bag). This device is to be used as an oxygen supplement and is not considered life supporting or life sustaining.

I . BEFORE INSTALLATION

- The concentrator should always be kept in the upright to prevent cabinet damage while being transported.
- Electrical source, power voltage is instable that beyond normal power voltage range. Please add manostat.
- Use eligible, safe power set and junction box.
- Curbstone people do not open oxygen concentrator's cabinet.

II . PUT POSITION

- You may select a room in your house where using your oxygen concentrator would be most convenient. Your concentrator can be easily rolled from room to room on its casters.
- Be certain to place the unit so all sides are at least 10cm away from walls, draperies, furniture, or other obstruction. Do not place the unit in a confined area.
- Oxygen concentrator must avoid heat source, fire source, wetness, exorbitant or over-low extraventricular condition.
- Sundries and vessel do not be placed on top of the concentrator.

- NEVER block the air openings of the unit or place it on a soft surface, such as a bed or couch, where the air opening may be

SAFETY NOTES

blocked. Keep the openings free from lint, hair and the like.

III. USING

- The use of oxygen therapy requires that special care be taken to reduce the risk of fire. Users **MUST NOT SMOKE** while using this device. Keep all matches, lighted cigarettes or other sources of ignition out of the room in which this product is located. **NO SMOKING** signs should be prominently displayed. Textiles and other materials that normally would not burn are easily ignited and burn with great intensity in oxygen enriched air. Failure to observe this warning can result in severe fire, property damage and cause physical injury or **DEATH**.
- For optimum performance, do not open or turn off the concentrator frequently, reset after 3~5 minutes. Shorter periods of operation may reduce maximum product life.
- A spontaneous and violent ignition may occur if oil, grease or greasy substances come in contact with oxygen under pressure. These substances **MUST** be kept away from the oxygen concentrator, tubing and connections, and all other oxygen equipment. **DO NOT** use any lubricants unless recommended by manufacturer.

IV. MAINTENANCE

- The oxygen concentrator was specifically designed to minimize routine preventive maintenance at intervals of once per year. Only

SAFETY NOTES

professionals of the healthcare field or persons fully conversant with this process such as authorized or factory trained personnel should perform preventive maintenance or performance adjustments on the oxygen concentrator.

V. RADIO FREQUENCY INTERFERENCE

- Most electronic equipment is influenced by Radio Frequency Interference(RFI). CAUTION should be exercised with regard to the use of portable communications equipment in the area around such equipment.

VI. TO REDUCE THE RISK OF BURNS, ELECTROCUTION, FIRE OR INJURY TO PERSONS.

- Avoid using while bathing. If continuous usage is required by the physician's prescription:

The concentrator must be located in another room at least 2.5m from the bath.

- DO NOT come in contact with the concentrator while wet.
- DO NOT place or store product where it can drop into water or other liquid.
- DO NOT reach for product that has fallen into water. UNPLUG IMMEDIATELY.
- A product should NEVER be left unattended when plugged in.

- This device is to be used only in accordance with the prescription of a physician and this User's Manual. If at any time the patient or

SAFETY NOTES

attendant conclude that the patient is receiving an insufficient amount of oxygen, the supplier and/or physician should be contacted immediately. No adjustments should be made to the flowrate unless prescribed by a physician.

- Close supervision is necessary when this product is used near children or physically-challenged individuals.
- Use this product for only intended use as described in this manual.
- DO NOT use parts, accessories or adapters other than those authorized by manufacturer.
- DO NOT connect the concentrator in parallel or series with other oxygen concentrators or oxygen therapy devices.
- Use of some administration accessories or certain humidifiers not specified for use with oxygen concentrator may impair the performance.
- In certain circumstances oxygen therapy can be hazardous. Manufacturer recommends that you seek medical advice before using this product.
- Avoid creation of any spark near medical oxygen equipment. This includes sparks from static electricity created by any type of friction.

FEATURES

I. SUMMARY

7F-3 oxygen concentrator is intended for individual use in the home. It is an electronically operated device that separates oxygen from room air. It provides high concentration of oxygen directly to you through a nasal cannula. Clinical studies have documented that oxygen concentrators are therapeutically equivalent to other types of oxygen delivery systems.

This user's manual will tell you about your concentrator and will serve as a reference as you use your concentrator.

II. CHARACTERS

- Complete plastic out shell, safe and reliable.
- Timing turn off function using convenience.
- Exceed press safety valve helping safe ensure.
- Install power cut warning function.
- Compressor with hot protection which ensure safe of the compressor and concentrator.
- Power cord and nasal oxygen cannula etc accessories can be put in the store box of concentrator.

III. SPECIFICATIONS

1. Flow Range: 1~3L/min
2. Oxygen Concentration: $\geq 90\%$

3. Maximum Outlet Pressure: $45\text{kPa} \pm 4.5\text{kPa}$

4. Pressure Relief Mechanism Operational at: $240\text{kPa} \pm 24\text{kPa}$

FEATURES

5. Altitude: Up to 1828 meters above sea level without degradation of concentration levels. From 1828 meters to 4000meters below 90% efficiency.

6. Sound Level: $\leq 55\text{dB(A)}$

7. Power Supply:

AC120V $\pm 10\%$ AC220V $\pm 10\%$ AC230V $\pm 10\%$

50Hz 60Hz

4.0 amps

8. Input Power: $\leq 350\text{VA}$

9. Weight: 26.5kg

10. Dimension: $47 \times 28.5 \times 55.6(\text{cm}^3)$

11. Minimum Operating Time: 30minutes

- Electric classification: II class B type.
- Work system: work continuously.
- Keep it far from flammable and explosive gas area.

IV. NORMAL WORKING CONDITION

- Temperature range: $10^\circ\text{C} \sim 35^\circ\text{C}$
- Relative humidity: $20\% \sim 60\%$
- Atmosphere pressure: $86\text{kPa} \sim 106\text{kPa}$

HANDLING

I. UNPACKING

- Check for any obvious damage to the carton or its contents. If damage is evident, please notify the carrier or local dealer.
- Remove all loose packing from the carton.
- Carefully remove all the components from the carton.

NOTE: Unless the oxygen concentrator is to be used immediately, retain containers and packing materials for storage until use of the concentrator is required.

II. INSPECTION

- Examine exterior of the oxygen concentrator for nicks, dents, scratches or other damages. Inspect all components.

III. STORAGE

- Store the repackaged oxygen concentrator in a dry area.
- DO NOT place other objects on top of the repackaged concentrator.

OPERATING

I. PREPARE WORK

1. Open the transparent door, unscrew the bottle from the humidifier clockwise. Fill the bottle with pure water (or distilled water) to the level indicated by the manufacturer.

DO NOT OVERFILL humidifier bottle.(Figure 1)

2. Screw securely the bottle back counterclockwise.
3. Close the transparent door.
4. Connect the power supply.

WARNING:

- 1) If the concentrator has a damaged cord or plug, if it is not working

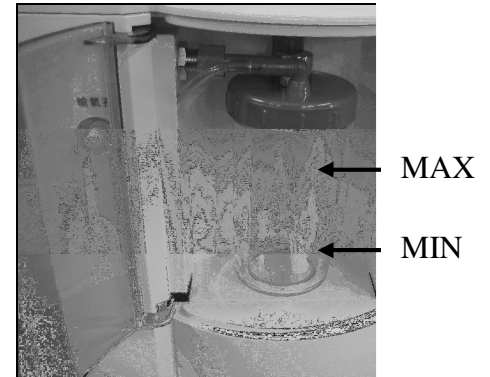


Figure 1

- properly, if it has been dropped or damaged, or dropped into liquid, call Qualified Service Personnel for examination and repair.
- 2) Keep the cord away from HEATED or HOT surfaces.
- 3) Do not move or relocate concentrator by pulling on the cord.
- 4) Do not use extension cords with this unit.
5. Press down the power switch while the display shows “— — ” . After about four seconds, the concentrator will work.

OPERATING

NOTE: Concentrator may be used during the initial start warm-up time (approximately 30 min) while waiting for the O₂ purity to reach maximum.

II. OXYGEN ABSORBING OPERATION

1. FLOWRATE

- Turn the flowrate knob to the setting prescribed by your physician or therapist.

NOTE: To properly read the flowmeter, locate the prescribed flowrate line on the flowmeter. Next, turn the flow knob until the ball rises to the line. Now, center the ball on the L/min line prescribed.

CAUTION: If the flowrate on the flowmeter ever falls below 0.5L/min, check tubing or accessories for blocked or kinked tubing or a defective humidifier bottle.

- Meanwhile, humidifier bottle will have air bubble around the sieve core. Then, oxygen comes from the oxygen outlet.

2. Connect nasal oxygen cannula to oxygen outlet, the other end match the patient.

Note: The time of absorbing oxygen and the flowrate range according to the doctor's advices.

III. SETTING TIMING UP

User can press the timing button in 1-99 minutes.

- When it start working "--"shows on display, it says timing

OPERATING

function not open. It will work continually until power supply cuts off.

- Press the "+"button once, operation time increases one minute, holding the button more than 1.5 seconds it will increase continually.


- Press the "-"button once , operation time decrease one minute, holding the button more than 1.5 seconds it will decrease continually.

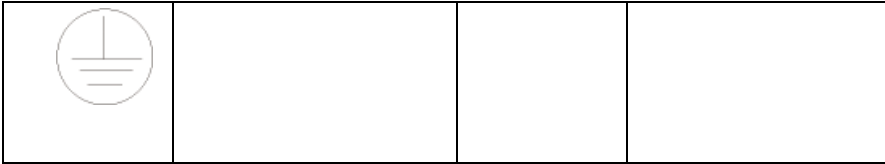
- It will auto turn off when finishing timing meanwhile "00" show on display. Reset timing function.

IV. TURNING OFF

Take off nasal oxygen cannula from oxygen outlet first, close power switch, then cut off power source.

V. SYMBOL AND SIGNIFICATION

Symbol	Signification	Symbol	Signification
~	Alternating current		Consult the manual
	Earthing		



MAINTENANCE

NOTE: Power should be disconnected before beginning preventive maintenance on the cocentrator. The cocentrator is specifically designed to minimize routine preventive maintenance at intervals of once per year. In places with high dust or soot levels, maintenance may need to be performed more often. The following must be performed at a minimum of one year in service to assure years of additional reliability.

I . CLEANING CABINET

WARNING: CUT OFF the power supply first. To avoid electrical shock, DO NOT remove cabinet.

Clean the cabinet with a mild household cleaner and non-abrasive cloth or sponge at least one time each month.

II . CLEANING FILTERS

Please clean and replace the filters in time, it's very important to protect compressor and delay machine's life.

CAUTION: DO NOT operate the concentrator without the filters installed.

- Disassembly

- 1) The first mesh in filter cleans once half a month. I -stage filter A can be taken out adown from the bottom. I -stage filter B can be tacken out parallel from the bottom. (Figure 2)



MAINTENANCE

- 2) II -stage filter mesh in filtrater cleans once month. (Figure 3)

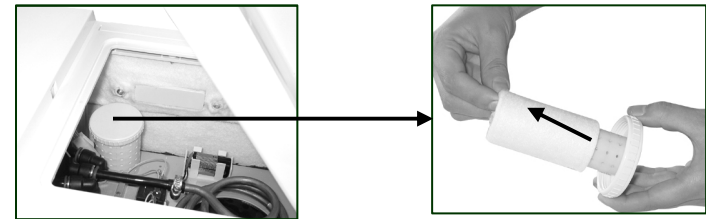


Figure 3

- ① Open the store box cover (Not: not exceed 90 degree, avoid break) , unscrew the screw, take off the store box, turn off the filter core.
 - ② II -stage filter mesh cleaning time depends on practically using and condition. If the filter core becomes black, please replace or clean at once, whether the practice time is long or short.
- Cleaning
 - 1) Clean the filters with a vacuum cleaner or wash in warm soapy water and rinse thoroughly.
 - 2) DRY the filters thoroughly before reinstallation.

III. CLEANING HUMIDIFIER

1. Change the water in humidifier bottle every day.
2. Clean humidifier once week with soapy water and rinse it with a solution of ten (10) parts water and one (1) part vinegar. Rinse thoroughly with warm water and refill with pure water (or distilled water) to the level shown on the humidifier.

- Disassembly

MAINTENANCE

- Open the transparent door, disconnect the oxygen tubing from humidifier outlet. (Figure 4)

(NOTE: No blobs in oxygen tubing)



Figure 4



Figure 5

- 2) Unscrew the humidifier screw, then take out of the humidifier. (Figure 5)

IV. REPLACE FUSE TUBE

1. Fuse tube for net power (Type: RF4AL250V~/Φ5×20) (Figure 6)
Remove fuse box in the power socket on left cabinet bottom with a flat head screwdriver, replace the fuse tube conveniently.
2. Fuse tube for circuit (Type: RF1AL250V~/Φ5×20) (Figure 7)

WARNING: CUT OFF the power supply first. Open the store box cover, unscrew the screw, take off the store box. Unscrew fuse box counterclockwise, replace the fuse tube.



Figure 6

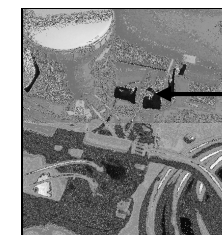


Figure 7

fuse tube

MAINTENANCE

V. REPLACE BATTERY (Figure 8)

When alarm of buzzer is weak, take out the store box, replace the battery. (NOTE: It's 9V stromatolite battery. If the concentrator dosen't use for a long period, please take off the battery.)

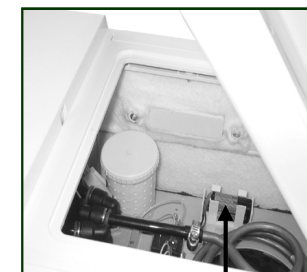
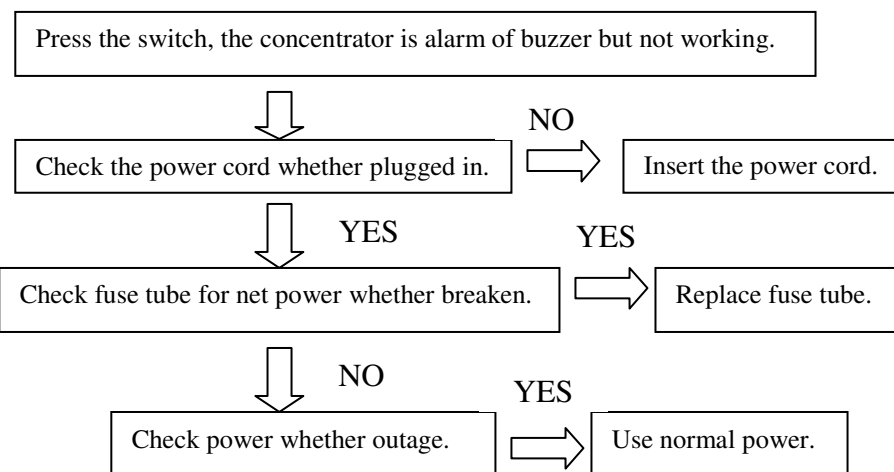
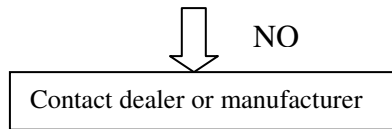


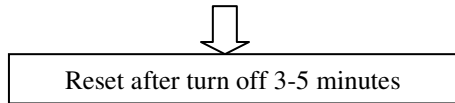
Figure 8 battery

VI. TROUBLESHOOTING GUIDE



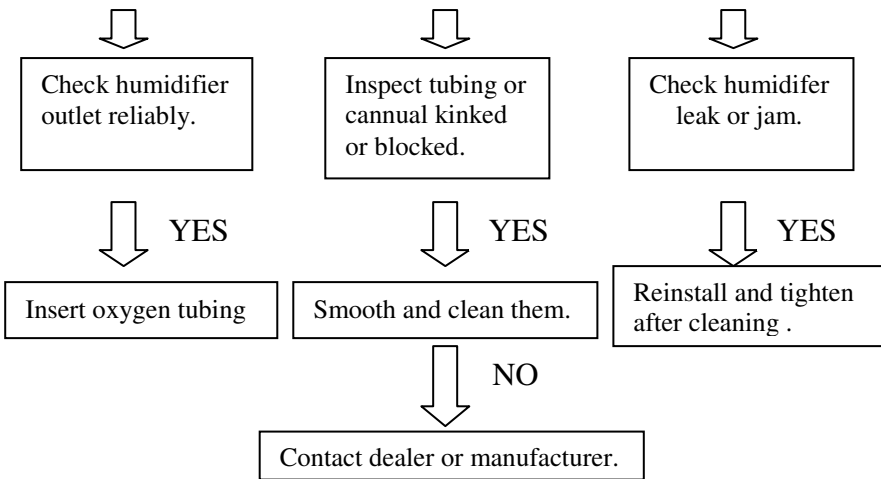


Chaos in display

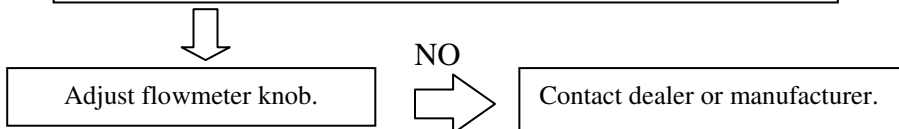


MAINTENANCE

Concentrator is working, but oxygen from outlet is little or no.



The ball in the flowmeter located on "0" position or float unstable.



If you have all other problems, TURN OFF the concentrator first, use your reserve oxygen supply (if provided), and contact dealer or manufacturer immediately.

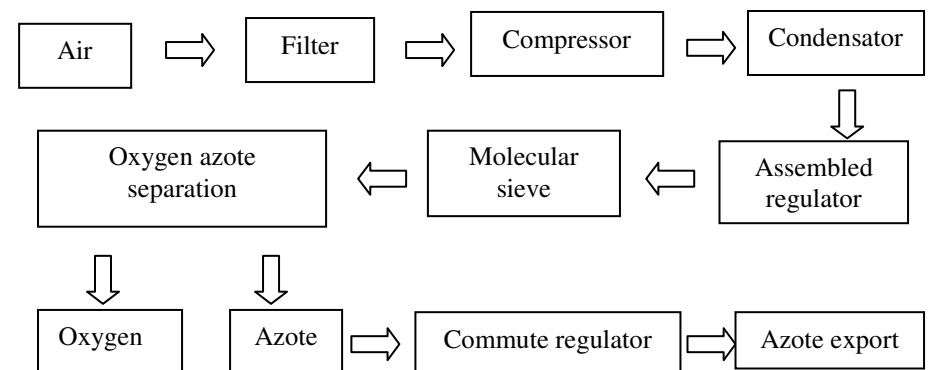
OTHER ATTENTION ITEMS

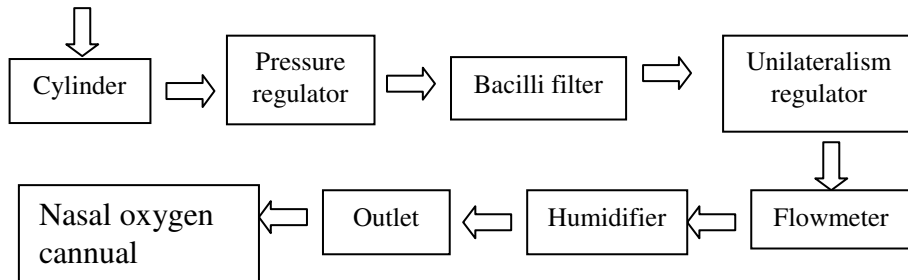
I. LIMITATION OF TRANSPORT AND STOCK

- Temperature range: $-40^{\circ}\text{C} \sim 55^{\circ}\text{C}$
- Relative humidity: 15%~95%
- Atmosphere pressure range: 50kPa~106kPa
- Shipping weight: 31.5 kg

The concentrators must be stored in aeration without erode gas, avoided shaking and inversion in transport.

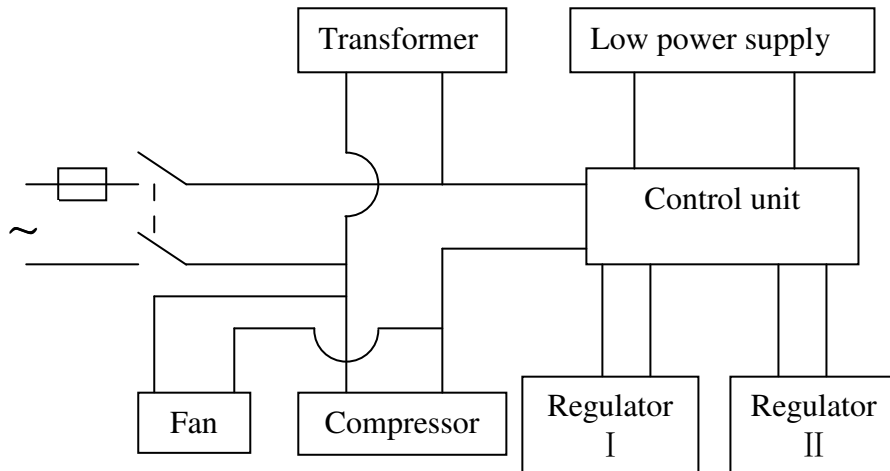
II. GAS PASS OPERATION SKETCH MAP





OTHER ATTENTION ITEMS

III. ELECTRICAL ELEMENTS



IV. ACCESSORIES LIST

- | | |
|--------------------------------|-----------------------------|
| 1. Nasal oxygen cannula: 1 set | 2. Filter core: 1 set |
| 3. Power cord: 1 piece | 4. Fuse tube: each 2 pieces |
| 5. Manual 1 piece. | |

All specifications and product configurations are subject to change without notification.